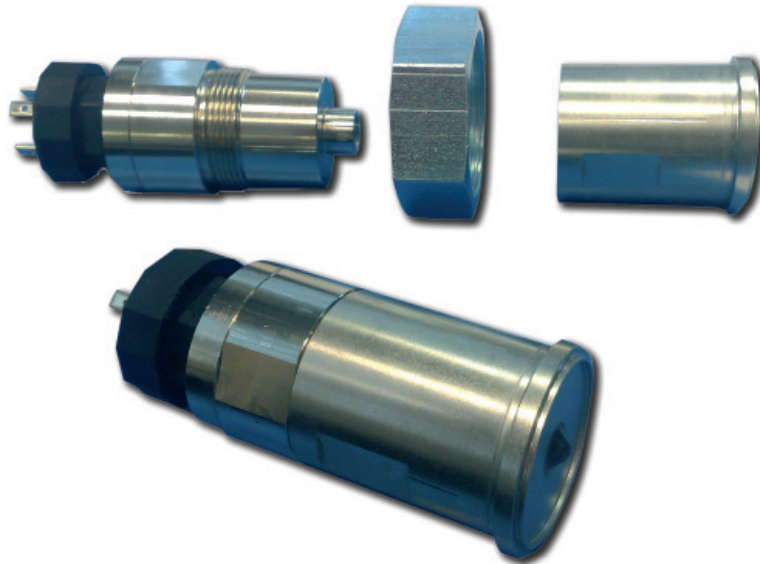


Rotalock



The **Rotalock optical level switch** is specially designed for use in **level monitoring for controlling the oil or refrigerant level in HVAC&R systems.**

The bodies are made of **steel** and sensor dome is fused with the body so if well mounted the sensor is leakage free.

The two parts design allow the fast replacement of the electronic parts without depressurizing the system.

Main features: immediate sight glasses replacement
 Easy maintenance
 critical fluid level detection on machine tools, chillers and any industrial OEM equipment
 monitoring refrigerant liquid level in both horizontal and vertical liquids receivers
 monitoring oil level in oil reservoirs
 P.O.E. Oil and Refrigerant Fluids compatibility

Technical Data of the Instrument	
OPERATION MODE	Detect liquid presence with contact
REPEATABILITY	± 2 mm
BODY MATERIALS	Nickel plated Steel
SENSIBLE DOME	Glass
MECHANICAL CONNECTION	Din Connector 43650A, ROTALOCK 1"3/4 - I2UN
ELECTRONIC PROTECTIONS	Over voltage.
MAX. TEMPERATURE RANGE	From -40°C up to +125°C
STORAGE TEMPERATURE	From -40°C up to +125°C
SUPPLY VOLTAGE	24 VAC ± 20% 50/60Hz
AC OUTPUT TYPE	100 mA max
OUTPUT MODE	Output Normally Open or Closed in the air
MAX PERMISSIBLE PRESSURE	45 bar
TORQUE TIGHTEN	40 Ntm