

## K25 Level Switch for CO<sub>2</sub>



## Operating Instructions

**Teklab Sas**  
Via Santhià, 94 – 41100 Modena, Italy  
Tel. 0039 059 375498 Fax 0039 059 376294  
[info@teklab.eu](mailto:info@teklab.eu) [www.teklab.eu](http://www.teklab.eu)

## Summary

1. Note .....	2
2. Product Conformance .....	2
3. Instrument Inspection .....	2
4. Specific Application .....	3
5. Operating Principle.....	3
6. Technical Data of the Instrument .....	4
7. Electrical Connection .....	4
8. Temperature Reference .....	5
9. Installation instruction.....	6
10. Mechanical Dimensions .....	7
11. Recommendation .....	7

## 1. Note

Please read and take note of these operating instructions before unpacking and commissioning. The instruments may only be used, maintained and installed by personnel familiar with the operating instructions and the applicable health and safety requirements.

## 2. Product Conformance

The above product conforms to the following standards noted below:  
EN 50081-1 1993.03  
Electromagnetic compatibility (EMC) - Generic emission standard  
EN-50082-2 1996.12  
Electromagnetic compatibility (EMC) - Generic immunity standard

## 3. Instrument Inspection

The instruments are inspected before dispatch and sent out in perfect condition. Should damage to the instrument be visible, we recommend close inspection of the delivery package. In cases of damage, please immediately inform the forwarder as he is liable for any damage in transit.

Scope of Supply  
\* Level Switch K25 and o-ring when requested.



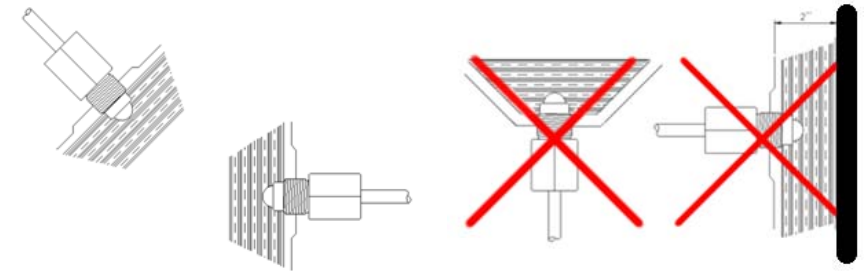
## 8. Temperature Reference

Temperature (°C)	Current (mA)	Voltage (mV)(*)
-40	4	400
-30	5	500
-20	6	600
-10	7	700
0	8	800
10	9	900
20	10	1000
30	11	1100
40	12	1200
50	13	1300
60	14	1400
70	15	1500
80	16	1600
90	17	1700
100	18	1800
110	19	1900
120	20	2000

(\*) Example with an external load of 100 ohm resistor

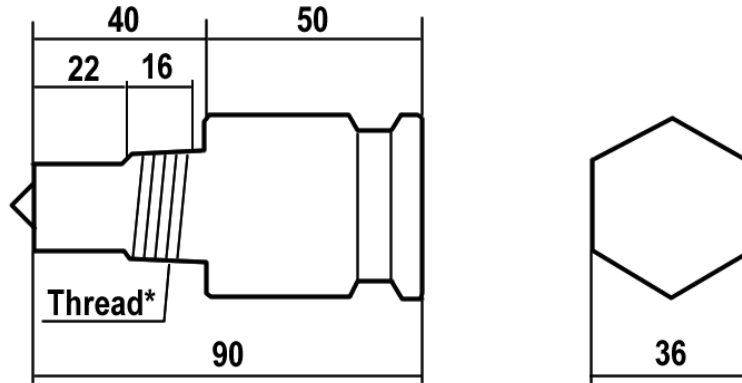
## 9. Installation instruction

- Only qualified personnel should carry out installation
- Protect hands and face from contacting the liquids, which may contain harmful acid.
- Depressurise the system before attempting any work
- Switch off power supply and isolate system
- If fitting to an existing installation, drain the refrigeration system
- Assemble the switch on the system



- Do not install sensor close to infrared sources.
- Dome of the sensor must be at least 2" (~ 50mm) from any reflective surfaces. Please contact Teklab for lower distances.
- Do not install the sensor in a stagnation point of the liquid
- Do not use to detect freezing liquids
- The mounting position corresponds to the desired switching point.
- The optical sensor tip must be free of insulating materials.
- The sensor tip must be installed in a way that it is not in contact with any moving parts inside the tank or the reservoir.
- During installation the sensor tip may not be touched with any device which could scratch or damage the glass dome in any way.
- It is recommended that for conical threads proper tapes should be applied to the threads itself on the switch body. The switch should then be threaded and sealed by using a correct wrench and under no circumstances by using any other device which may damage the housing .

## 10. Mechanical Dimensions



Quotes in mm

\*Available threads: 3/4" NPT, 1"1/8 18 UNEF.

## 11. Recommendation

Teklab recommend the use of a 10 micron filter in the oil line to protect the sensor from contamination. While the device is totally maintenance free we recommend that the optical lens be cleaned during major servicing.

Teklab is not to be held responsible for erroneous literature regarding dimensions, applications, etc. stated in this document. Products, specifications and data in this literature are subject to change without giving any evidence. The information given herein is based on technical data and tests which Teklab acquired during years of experience and believe to be reliable and which are in compliance with technical knowledge of today. It is intended only for use by persons having the appropriate technical knowledge and skills, at their own discretion and risk. Since conditions of use are outside of Teklab control we can not assume any liability for results obtained or damages occurred due to improper application.